

1842 Brummel Drive, Elk Grove Village

40,080 SQUARE FEET



FACILITY

AVAILABLE	40,080 SF
BUILDING SIZE	266,989 SF
OFFICE AREA	7,000 SF (can be downsized)
CEILING HEIGHT	20'6" clear
LOADING	2 interior docks 1 drive-in door
POWER	1800A @ 480V
CAR PARKING	1.29 / 1,000 SF
NET RATE	Subject to Offer

AMENITIES

Convenient dock access
High image property
Institutional ownership and management

LOCATION

Located in Regent O'Hare Business Center
Nearby public transportation
Near north cargo entrance and future west entrance to O'Hare Airport
Minutes from new 4-way interchange at I-90 / Elmhurst Road

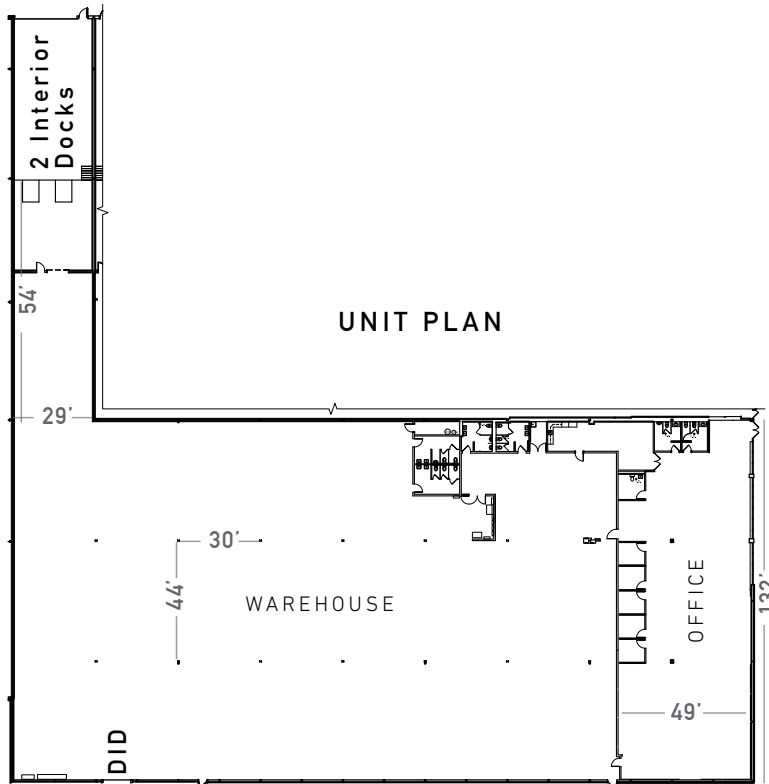
B R E N N A N
I N V E S T M E N T
G R O U P

NAIHiffman
Commercial Real Estate Services, Worldwide

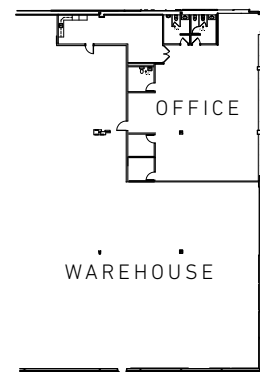
Terry Herlihy
630 693 0664
therlihy@hiffman.com

1842 Brummel Drive, Elk Grove Village

40,080 SQUARE FEET



POTENTIAL DEMISED OFFICE AREA



BUILDING / SITE PLAN

